



## Art in the Library!

Celebrate the Holiday season (and the library re-opening) with our December artists Martha Rogers and Meg Bishop hosting their First Friday reception, December 5, 5-7PM in the library meeting room. Special offerings of holiday cards and gift boxes by our (delayed) November artist, Millard Davidson...available. First Friday only!!

TITLE: Hidden Treasures

**SHOW STATEMENT:**

For the past few years, Martha Rogers has been exploring Bainbridge Island on foot with her husband Kevin and their newest family member Koko, a four-legged enthusiast for long walks. Over time, Martha discovered a large number of unique outdoor "yard art" in different nooks and crannies around the island. She wanted to share these wonders with others, so painted watercolor illustrations of a dozen of them and teamed up with Bainbridge Island poet Meg Bishop who wrote a whimsical poem to go with each one of them. Their hope is to inspire others to keep their eyes open for all these hidden treasures around the island.

### **Rooster on a Rampage**

*Oh my, he's up high,  
and holding a chainsaw,  
but with what?  
Can a wing hold a thing?  
Do roosters climb logs?  
Can farm animals rule the forest  
like a real lumberjack  
standing on log stacks?*

*But this is a combed thing  
with red wattle and wings.  
It's amazing! Am I crazy?  
It must be a joke!  
Do my eyes deceive me?  
Nope, nope, nope!*

*Such a fun thing  
for all ages to see  
out in the trees  
on the side of the street.*







### **Crazy Croc**

*If the sight of bamboo appeals to you,  
and you're willing to walk towards the Wing,*

*It sneaks up all of a sudden,  
this metal, menacing thing:*

*its long, strong tail and snapping snout -  
JUMP BACK - it's a Bainbridge Island  
art attack!*

*It appears he's headed to the golf course.  
There's one just down the street.*

*Will he scoop loose balls in his open trap?  
Will he gobble you up like a treat?*

You can view this exhibit all of December during regular library hours (unless a program is happening). A portion of sales is donated to the library.

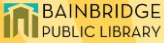


As always, thank you for supporting local artists and your Bainbridge Public Library.

~ Linda Meier, art coordinator

---

## **Save the Date!**





 And  present

**Treats!** **Free Admission!** **Purchase Books!** **Prizes!**


# BOOK LOVERS DAY OUT!

Our annual book lovers event is back! Penguin Random House Publishing Rep Katie Mehan faces off against Harpers Collins' Rep Jamil Zaide to reveal their lists of recently released books that your community book group will want to read.

Event is free, but tickets required. See below!

**SUNDAY** 10:30am -  
**FEBRUARY 15, 2026** 12:30pm

AT  
**BAINBRIDGE PUBLIC LIBRARY** 1270 MADISON AVE N  
 Bainbridge Island, WA 98110  
 206-842-4162

TICKETS HERE: To get your free tickets, scan here  or follow the link below:  
<https://forms.gle/9vAAQC7KUD7ssDiy6>

**NOTE: You can also click here to register!**


 Playwrights of KITSAP:

## Call for Submissions!

Deadline: **February 14, 2026**

Open Subject:  
NO Theme

2026  
**Ten-Minute Play**  
 FESTIVAL

August 20-22, 2026  
 islandtheatre.org

Island Theatre is now accepting submissions of ten-minute plays for our 2026 Ten-Minute Play Festival! Submission deadline is February 14, 2026. There is no theme for plays this year. The only requirement is that plays' performance time be ten minutes or less.

The competition is open to all Kitsap County playwrights – experienced and aspiring – high school age and above. To be a "Kitsap County playwright" means you currently live or work in Kitsap County, or you lived or worked here for a substantial period in the past.

Ten plays will be chosen from all the submissions by a panel of theatre professionals and the Island Theatre board of directors and announced in April. The chosen plays will be produced in four fully staged performances at

the BPA Buxton Center for the Arts on Bainbridge Island during Island Theatre's Ten-Minute Play Festival in August 2026.

**For more information and submission guidelines, go to [www.IslandTheatre.org](http://www.IslandTheatre.org).**

**About Island Theatre.** Island Theatre provides high-quality theater in intimate settings for adults who like to think. Our regular schedule includes Island Theatre at the Library (script-in-hand performances at the Bainbridge Public Library); Island Theatre at Your House (YoHo) (potluck play-readings in private homes at which guests are welcome to read a part); and the annual Island Theatre Ten-Minute Play Festival. Run entirely by volunteers, Island Theatre is a nonprofit 501(c)(3) organization supported by donations, the Bainbridge Community Foundation, the City of Bainbridge Island Cultural Fund, the Rotary Club of Bainbridge Island, and One Call for All. More information is at [www.IslandTheatre.org](http://www.IslandTheatre.org).



## Facilities Report

### On the Solar Front

- We can't say it enough . . . A big, Big, BIG Thank You! to all who have generously responded to our Solar Fundraising Campaign! YOUR generosity has demonstrated, once again, how our community values and supports the library. With your help, the library will reduce its energy-related overhead while providing real-time information on the energy our panels are producing. Increasing awareness in the community of the benefits of incorporating clean, renewable energy in our homes and businesses helps to fulfill one aspect of the library's mission, to be a proponent of ongoing education.
- By the time you read this, the library will have already re-opened (as of Sunday, November 30th).
- At this writing (Nov 25), all major aspects of the installation are complete. The application for system certification by Puget Sound Energy has been submitted. Once we pass that inspection, the system can be activated. Watch for some form of physical evidence (maybe balloons?) to indicate **"WE'RE GENERATING POWER!!"**

That will be a happy day!

Some other acknowledgements we need to make:

- Thank you, thank you, thank you to our patrons - for your patience during the closure. We apologize for the lack of forewarning about the library's closure, and the inconvenience it raised. Once we obtained the required building permits, and faced with notoriously fickle autumn weather, and a looming deadline to complete installation and commissioning in order to be



eligible for a substantial rebate from the federal government, we felt we needed to start the installation without delay.

- Thank You to Kitsap Regional Library (KRL) who rallied up so quickly to facilitate the closure.

- Thank you to the dedicated KRL staff members who provide the outstanding library services to our Bainbridge Island community. We apologize for the disruption the closure caused for you and your families.

- Nobody liked the look of our dear library, closed, fenced off and empty. The bright ending to the story is knowing we've done something POSITIVE for the library, AND we've reduced our carbon footprint for Mother Earth! ☺

Some pictures taken during the project:  
Some sad ones . . . with the library closed.

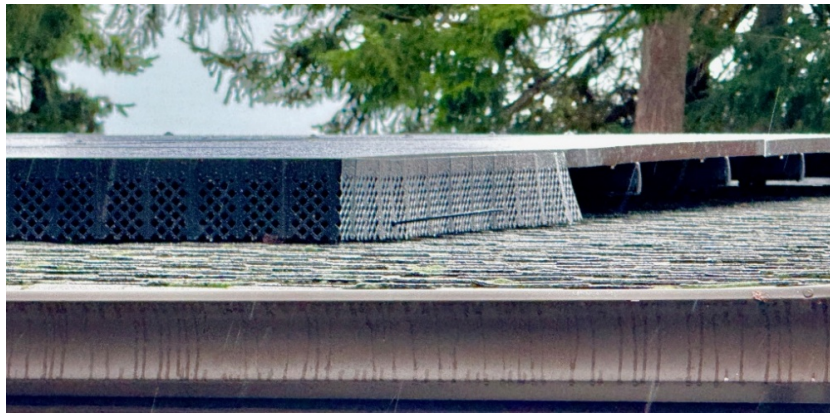


And some happier ones, showing progress . . . Love those panels!





And though not fully installed for this picture, the pest abatement panels that will surround all panels and keep our adorable roof visitors (squirrels, birds, and the like) from taking up permanent residence under the panels or munching on things they shouldn't! 😊



**We look forward to seeing you and your family at the library!**



One Call for All. Look for your Red Envelope later this month and remember us when you give! Bainbridge Public Library proudly participates in One Call for All!

<https://onecallforall.org/bainbridge-public-library/>

You can also give online at [www.onecallforall.org](http://www.onecallforall.org).

**A Quote for Book Lovers**



**"You may perhaps be brought to acknowledge that it is very well worthwhile to be tormented for two or three years of one's life, for the sake of being able to read all the rest of it."**

~ Jane Austen

---



The Bainbridge Island Genealogical Society is hosting our Annual Holiday Party on **Friday, December 12, 2025**, in the large meeting room at the Bainbridge Public Library, from **11:00 am to 1:00 pm**. All BPL patrons are invited to stop by and join the festivities. There will be warm wassail, tasty treats, and lively sharing. This will be a good chance for you to meet our members and learn what makes genealogy fun!

This year's theme: In a One Horse-less Open Sleigh...

Our ancestors came in boats, canoes, horse drawn buggies, covered wagons, horseback, trains and on foot. Oh, the adventures! How did they learn to navigate those oceans, rivers, rutted roads, and trails?

What memories do you have of learning to explore your world by car, or bike or bus? Be ready to share!

Find us @ [bigenealogy.org](http://bigenealogy.org)



This delightful picture shows one of our own members, Susan Berdan and husband Brian leaving for their Honeymoon.

---

**With Each Leaf, a Promise and an Inspiration**





Just as tree roots embed themselves in our garden, sustaining life, nurturing growth--the leaves on our Legacy Tree hold out the promise that Bainbridge Public Library will endure into the future. Each leaf represents the pledge of a gift to the BPL from an estate. Each leaf signifies a love of community and the belief that libraries matter.

*Please notify us if you have made provisions in your estate plan to leave a legacy gift. If you would like more information about making a legacy gift leave a message at 206-866-1250, email [legacy@bainbridgepubliclibrary.org](mailto:legacy@bainbridgepubliclibrary.org) or visit the BPL website, [bainbridgepubliclibrary.org](http://bainbridgepubliclibrary.org), and click on A Lasting Legacy under the Support BPL tab to download a Donor Intention Form. We would be pleased to thank you and to honor you now!*

---

## **Bainbridge Public Library Garden Fund Honoring Special People**





Created by Island artist Dick Strom and erected by volunteers from BPL's Facilities and Garden Committee, the metalwork mural is located near the Legacy Tree on the south side of the library building. The nameplates below the mural will recognize honorees in whose name's gifts were made to the fund. The minimum donation for a nameplate is \$500.

For information about making contributions to the BPL Garden Fund, visit our website at [bainbridgepubliclibrary.org](http://bainbridgepubliclibrary.org) or leave a contact number at 206-866-1250 (message line).

**Thank you for your continued support of our community's library home.**

---

## Featuring Local Authors - Susan Wiggs



Susan Wiggs's life is all about family, friends...and fiction. She lives at the water's edge on an island in Puget Sound, and in good weather, she commutes to her writers' group in a 21-foot motorboat. She's been featured in the national media, including NPR, PRI, and USA Today, has given programs for the US Embassies in Buenos Aires and Montevideo, and is a popular speaker locally, nationally, internationally, and on the high seas.

From the very start, her writings have illuminated the everyday dramas of ordinary people facing extraordinary circumstances. Her books celebrate the power of love, the timeless bonds of family and the fascinating nuances of human nature. Today, she is an international best-selling, award-winning author, with millions of copies of her books printed in numerous countries



and languages. According to Publishers Weekly, Wiggs writes with “refreshingly honest emotion,” and the Salem Statesman Journal adds that she is “one of our best observers of stories of the heart [who] knows how to capture emotion on virtually every page of every book.” Booklist characterizes her books as “real and true and unforgettable.”

The author is a former teacher, a Harvard graduate, an avid hiker, an amateur photographer, a good skier, and terrible golfer, yet her favorite form of exercise is curling up with a good book. She lives on an island in Puget Sound, where she divides her time between sleeping and waking.

---

## Books Worth Sharing



### **The Twelve Dogs of Christmas** **By Susan Wiggs**

A year after a painful divorce, Brenda Malloy has put her life back together. She's trained for a marathon, is writing a children's novel, and she's found purpose and healing as a volunteer with a dog rescue organization in Houston, Texas. The rescue partners with a program in a small, snowy town deep in the Catskills. So, Brenda is arranging the transport of twelve rescued dogs from Houston to Avalon, NY—just in time for Christmas with their forever families. She thinks, “How hard can it be?” She knows the way, and she's just looking to escape the pain of Christmas.

But a blinding snowstorm, an escaped mutt, and a life-saving encounter with Adam Bellamy—a single dad and paramedic—means Brenda must stay in Avalon longer than she planned. As she drops off each precious pup at their new homes, some of the comfort and joy of the season begins to creep up on Brenda despite her best efforts to ignore the holidays. Full disclosure...I am not a fan of RomComs, and I am a devoted cat person, but this story pulled at my heartstrings and had me from the first bark.

~ Susan Braun



## Have You Seen This Library?



Since autumn 2006, you can find the extraordinary boekhandel Dominicanen (formerly Selexyz Dominicanen and Polare Maastricht) in the centuries-old Dominican Church in Maastricht, Netherlands. Two hundred years ago, the church lost its sacred function, and it has served as a snake house, bicycle shed and carnival temple for many years since. Many Maastricht people have special memories here, such as the 'first kiss'. You can still feel this rich history in this beautiful location. [Boekhandel Dominicanen](#) has a wide and deep range of public books, music, and books for professionals. But also for non-book lovers, this is a place you must visit when in Maastricht. In the former chancel of the Dominican Church, you can enjoy a delicious cappuccino or lunch, provided by the famous Blanche Dael Coffeelovers (the Maastricht roasting house). Boekhandel Dominicanen also serves as a cultural stage. It regularly hosts lectures, debates, and musical performances, and has space for exhibitions.

A stroll through the Dominican Church is an experience in itself; people don't call it the most beautiful bookstore in the world for nothing! Thank you to library users LinMara Bluebird and Joanie Klorer for this wonderful contribution!





If you visit Libraries, Museums, or Bookstores on your travels, please email photos of them for inclusion in this newsletter to [Susan Braun](mailto:Susan.Braun).

---



BPL is looking for volunteers to assist with social media and other fund raising and marketing activities. If you have skills in Facebook, Instagram, fund raising or other marketing areas and would like to increase the library's impact in our community please contact the library at [ask@bainbridgepubliclibrary.org](mailto:ask@bainbridgepubliclibrary.org). Time commitment is flexible, and creativity is appreciated!

---

# Book Sale



## Friends of the Library

Friends of the Library book sales will be on:

**Thursday, December 04th; Sunday, December 14th; and Sunday, December 28th, from 12-4.**

To see future sale dates and times check our website at

<https://www.bifriends.org> Books are plentiful, and the sale is a great way to support the library. If you have any questions, please send us a message at [books4all@bifriends.org](mailto:books4all@bifriends.org).

Friends of the Library continue to welcome donations of books in clean, undamaged-saleable condition during open library hours. (Damaged books must be recycled at our expense) Small quantities can be left in bins behind the hold shelves on the main floor. Larger quantities should be left inside the Friends door adjacent to the Children's library downstairs. There is a hand truck available. For questions about donations, please send us an email. Please do not leave books outside or in the library drop box or request help from the library staff.

---

## Useful Community Links



As a community service for our newsletter readers, we are introducing a list of links to important local resources. We invite our readers to send us additional links to include in this list. If you have a link that you would like to suggest for inclusion, send it to [susangb01@aol.com](mailto:susangb01@aol.com).

- [Bainbridge Community Foundation](#)
- [Bainbridge Island Genealogical Society](#)
- [Bainbridge Island Historical Museum](#)
- [Bainbridge Island Museum of Art](#)
- [Bainbridge Island Native Food Forest Field Guide](#)
- [Bainbridge Island Senior/Community Center](#)
- [Bainbridge Youth Services](#)
- [BARN \(Bainbridge Artisan Resource Network\)](#)
- [Bloedel Reserve](#)
- [Boys and Girls Club of Bainbridge Island](#)
- [Helpline House of Bainbridge Island](#)
- [Housing Resources Bainbridge Island](#)
- [Island Volunteer Caregivers](#)
- [PAWS of Bainbridge Island and North Kitsap](#)
- [Raising Resilience](#)
- [Sustainable Bainbridge](#)

But wait! There's more! Do you know about [Bainbridge Island Resource Directory \(BIRD\)](#)? It is another great source for valuable community resources!

---

## A Special Partnership

- **Bainbridge Public Library**, a separate nonprofit organization, owns, operates, and maintains the Library building and grounds through community donations and grants.
- **Kitsap Regional Library** provides the library staff, collection, classes, and a virtual library at [KRL.org](http://KRL.org) with funding from property tax revenues.



- **Together** we provide the quality library our community wants and has come to expect.



*"A library is a cross between an emergency exit, a life-raft and a festival—a cathedral of the mind; hospital of the soul; theme park of the imagination." ~ Caitlin Moran*

Find us on 



Bainbridge Public Library | PO Box 11815 1280 N Madison | Bainbridge Island, WA 98110  
US

[Unsubscribe](#) | [Update Profile](#) | [Constant Contact Data Notice](#)



Try email marketing for free today!